



ALUMNI

LYMM HIGH SCHOOL

Lymm Remembers

Remembrance Day is a time for reflection and also an opportunity to foster a sense of community (see p.3).

Hidden history of our Hall

The fascinating back story of Oughtrington Hall is unveiled in a new book (see p.7).



WELCOME

Dear Alumni,

Our 2024/25 school year has got off to a flying start! We began the September term celebrating our fantastic summer exam results – the best ever to date. The A' Level results in particular were the best set of post-16 results the school has ever had. You can read more about our summer of success on page 12.

You may also have read about us being recognised by *The Sunday Times* again as one of the very best comprehensive schools in the whole of the North West. The *Daily Mail* had already included Lymm High in its listing of top 10 state schools in the country. The recently published official Department for Education data tell the same story. In many respects, I don't particularly like 'showing off' about these things, but we are proud of this level of performance and feel it is important to celebrate these things.

Equally as important, is continuing to strengthen our ties with the Lymm community. And this is particularly highlighted in our annual commitment to observing Remembrance Day (see page 3); and in unearthing the history of our fantastic school thanks to local historians and the Lymm Heritage Centre (see pages 7–10).

We always like hearing from our alumni, and we welcome any to come back and visit us at any time. I always enjoy taking ex-students and staff around the school and chatting to them about their memories of this great place.

Kind regards
Gwyn Williams
Headteacher

LYMM REMEMBERS

Each year, Lymm High comes together to observe Remembrance Day, a solemn occasion dedicated to those who lost their lives in conflict.



It is a tradition that we hold close to our hearts, as it serves not only as a time for reflection, but also as an opportunity to foster a sense of community and a chance to remember the sacrifices made by others. This year, our commitment to Remembrance Day was as strong as ever, with students, staff, and the wider school community coming together in powerful and meaningful ways.

The Visual Arts and Technology faculty worked tirelessly to create a stunning installation in honour of Remembrance Day. The display, which extended from A Block through to the Atrium, was a remarkable sight, with hundreds

of handmade tissue paper poppies filling the space with their vibrant red petals. Suspended above the Atrium was a net-like structure, carefully crafted from red paper strips on which students across all year groups had written their personal Remembrance Day messages. These red strips, gathered together, formed a net-like canopy – a symbol of the camouflage nets used by the Armed Forces for protection and security during times of war.

Together, the full installation stood as a poignant tribute to the sacrifices made by so many, and a reminder of the importance of remembering our history.



Wreath design

This year also saw the introduction of a Key Stage 3 Inter-Hall wreath design competition, which was a fantastic way for students to engage with the remembrance process. Neville Davies, our wonderful contact at the Royal British Legion, once again supported us by organising the wreaths and suggested the idea of involving our students in the design of the centrepiece.

The aim of this competition was to design a logo that represented our school, which could be displayed in the centre of the wreath. The response was overwhelming, with so many wonderful designs submitted that it was difficult to choose the winners. However, after much deliberation, the talented Year 7 students Ginny Wong, Chloe Williams and Sophie Williams were selected and each won a lovely set of watercolour brush pens.

Their designs were brought to life by our brilliant Design Technology department and were then proudly presented by our winners at the



Remembrance Day ceremonies on Monday 11th November at The Cross, our old school site on Limefield Avenue, and at St. Peter's Church.

Community connections

In the run-up to Remembrance Day, our Humanities department worked with Lymm Heritage Centre to create a display alongside the poppy installation. This display highlighted our school's connections with the war, bringing to life the stories of those from our community who served and sacrificed (see p.6). The students and staff who contributed to this project did so with a real sense of purpose, and the resulting exhibition was a poignant reminder of the legacy of war and the importance of remembering those who gave their lives.

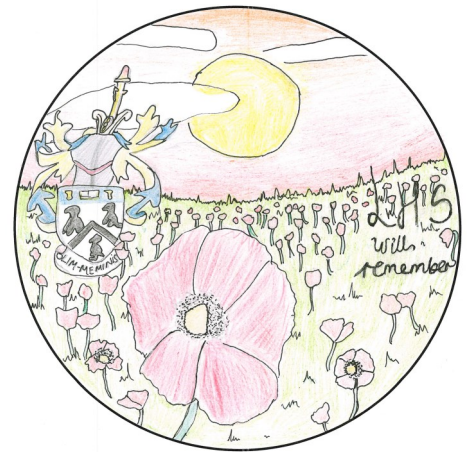
To ensure that all students understood the significance of the day, Head of Humanities, Mrs McGahey, created a video assembly that was shared with the whole school. The video provided historical context, shared personal



Ginny Wong



Chloe Williams



Sophie Williams

stories, and reinforced the importance of remembrance. It was a moving and thought-provoking piece that left a lasting impression on everyone who watched it.

At 11 o'clock on Remembrance Day, our students and staff observed the 2-minute silence with great respect. Mr Starkey and the music team played the *Last Post* in front of school, on the Languages yard and on the English yard.

The sound reverberated through the school, filling the atmosphere with solemnity and reverence. The silence that followed was impeccably observed by all students, each one taking a moment to reflect on the sacrifices made by so many.

Our school's Remembrance Day commemorations are an annual tradition that remind us all of the importance of remembering the past and honouring those who came before us.

This year's efforts were a beautiful and emotional display of the commitment we have as a school to uphold this tradition, ensuring that the legacy of the fallen lives

on in the hearts and minds of our students. It is through these shared moments of remembrance that we continue to foster a sense of community, respect, and gratitude that will carry us forward for years to come.



EDWARD JOHNSON

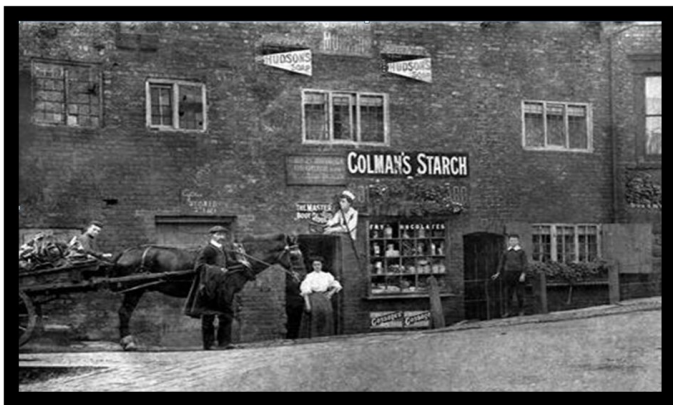


Every year, to mark Remembrance Day, Lymm High School will collaborate with Lymm Heritage Centre to tell the story of a local soldier from Lymm who lost his life in one of the World Wars. This year we remember **Pte Edward Johnson, 1897–1917.**

Edward (Eddie) was born in the Rushgreen area of Lymm in 1897. His early childhood was hit by a double tragedy. His father, who was a canal boatman drowned in Manchester in 1899 and just 3 years later, his mother also drowned in the Bridgewater Canal in Lymm in unexplained circumstances.

Eddie was brought up by his uncle, George Hazlehurst and his family, who ran a small shop near Lymm Bridge. He attended Pepper Street School and later was a pupil at Lymm School. He was also a chorister at St Mary's Church. He had a brief working life at the Linotype Works in Altrincham before enlisting in 1915 on or around his 18th birthday. Eighteen was the official minimum age to sign up.

Edward was posted with his regiment to France and on 31st July 1917, he was part of the very first advance in what would become known as the Battle for Passchendaele. The aim was to take possession of a small village on slightly elevated ground that made its position of strategic importance.



Eddie (possibly on the left) with his Aunt and Uncle at their shop next to Lymm Bridge on New Road. Approx. 1905-1908.



This disastrous conflict would drag on for months and claim 300,000 British casualties, killed or wounded, but Edward's battle lasted only a few hours. He was reported missing following the very first advance.

After 6 weeks of anguish and uncertainty, it was reported that Eddie died on 2nd August 1917, aged just 20, probably in captivity after being wounded. He is buried at Harlebeke New British Cemetery, West Vlaanderen, Belgium. There is also a half-size memorial to Eddie in the cemetery at St Mary's Church.



HIDDEN HISTORY OF OUR HALL

The fascinating back story of Oughtrington Hall is unveiled in a new book.

Instead of its usual role of providing a haven for learning, Lymm High's Oughtrington Hall has become its own subject of study. Local author Roger Hannam has explored two centuries of history of the Grade II listed building in his new book entitled *Oughtrington Hall and its People*.¹

From Monday to Friday, most weeks of the year, Oughtrington Hall is Lymm's busiest building as it echoes to the sound of thousands of students as the original core of Lymm High

School. But 200 years ago it would have been the much more subdued sound of cooks, maids, grooms, governesses and butlers as they tended to one of Lymm's great estates.

The Hall was built in the early 1800s and was occupied by the Trafford family, descendants of the Leighs of West Hall, High Legh.

The historian George Ormerod, writing before 1819, stated: *the hall, a handsome and spacious mansion, has been recently nearly rebuilt, and is seated on*

*high ground, commanding an extensive prospect of the vale of the Mersey and the high hills which enclose it.*²

In 1862, Oughtrington Hall was bought by George Charnley Dewhurst a cotton manufacturer from Manchester. He made the Hall slightly larger and built St Peter's Church across the road. This is where Lymm High School has its annual Christmas Services.

When war broke out in 1914, Henry Ford (founder of the Ford Motor Company) wanted to

A LOOK BACK

help the war effort by opening a hospital for wounded soldiers. However, he was advised that this was not allowed given the USA's neutrality in the war. Therefore, at the suggestion of his wife Clara they came up with a plan to create a settlement for Belgian refugees. Over 250,000 Belgian refugees had fled their country in the face of the German onslaught in the second half of 1914.

Oughtrington Hall had been bought 3 years earlier in 1911 by Sir William Lever, but was now lying empty. Percival Perry, a Lymm resident, who was head of Ford Motor Company (England) Limited and a family friend of Henry Ford, had relayed the plight of the Belgian refugees. He wrote to Clara Ford suggesting that he could negotiate a short-term lease on the building. With their authority, Perry leased Oughtrington Hall to accommodate ninety men, women and children. Sir William Lever would take rent on the building from Henry Ford



but would then re-donate it to the Belgian refugee fund.

Work quickly went ahead preparing Oughtrington Hall to receive the Belgian refugees. This colony was funded entirely by Henry Ford. The Belgian community that lived in the Hall created their own chapel, doctor's surgery, Laundry, and sewing and repair workshops. They even had their own farm, including a Piggery and Stables. The ground surrounding the hall was used for part of the farm, which is now the school fields.

In 1939, Charis Frankenburg evacuated over 40 children and eight staff to Oughtrington Hall

from her Open-Air School in Salford. A woman ahead of her time, Charis Frankenburg pioneered women's reproductive rights and family planning. She also employed a houseman and parlour man to work at Oughtrington Hall: positions traditionally filled by women. At the end of the War, Charis relocated to Oxfordshire.

In his book, Roger goes on to describe how the building then became the fourth home of Lymm Grammar School and its subsequent transition into the high school we know today.





Lymm High today

On Wednesday 15th January 2025, Roger visited Lymm High School and led two insightful events for staff and students. During Period 5 of the school day, Roger held a special presentation and workshop for our Year 9 Scholars. He asked students to imagine themselves in different historical periods of the Hall's long history, bringing the past to life in an interactive and engaging way. With the help of a metaphorical time machine, Roger transported the group the early 1800s, World War I, the 1930s and up to modern day.



At the end of talk, Roger undertook a Question & Answer session with Lymm High's Head of History, Miss Howard.

Following the presentation, students were taken to the Boardroom (located in B Block, within the Hall itself) to view a special exhibition. The display featured old maps, wills and testaments, newspaper clippings, estate listings, and photographs of Oughtrington Hall throughout the years. One surprising discovery was an image of the very room they were in – a Drawing Room complete with ornate gas lighting, offering a glimpse into how it once appeared.

After school, staff members were invited to view the exhibition and celebrate the history of our school alongside local historians from the Lymm Heritage Centre.



A LOOK BACK

The event was a wonderful opportunity for everyone to deepen their knowledge of the school's heritage and appreciate the fascinating stories that have shaped the community. Many of the historians had attended Lymm High when it was Lymm Grammar School and brought memorabilia with them, including a school newsletter from 1950!



This event was a valuable chance for both students and staff to connect with the past and gain a deeper understanding of the history that surrounds us every day. We look forward to more opportunities to explore and celebrate the unique history of Lymm High and the wider Lymm area.

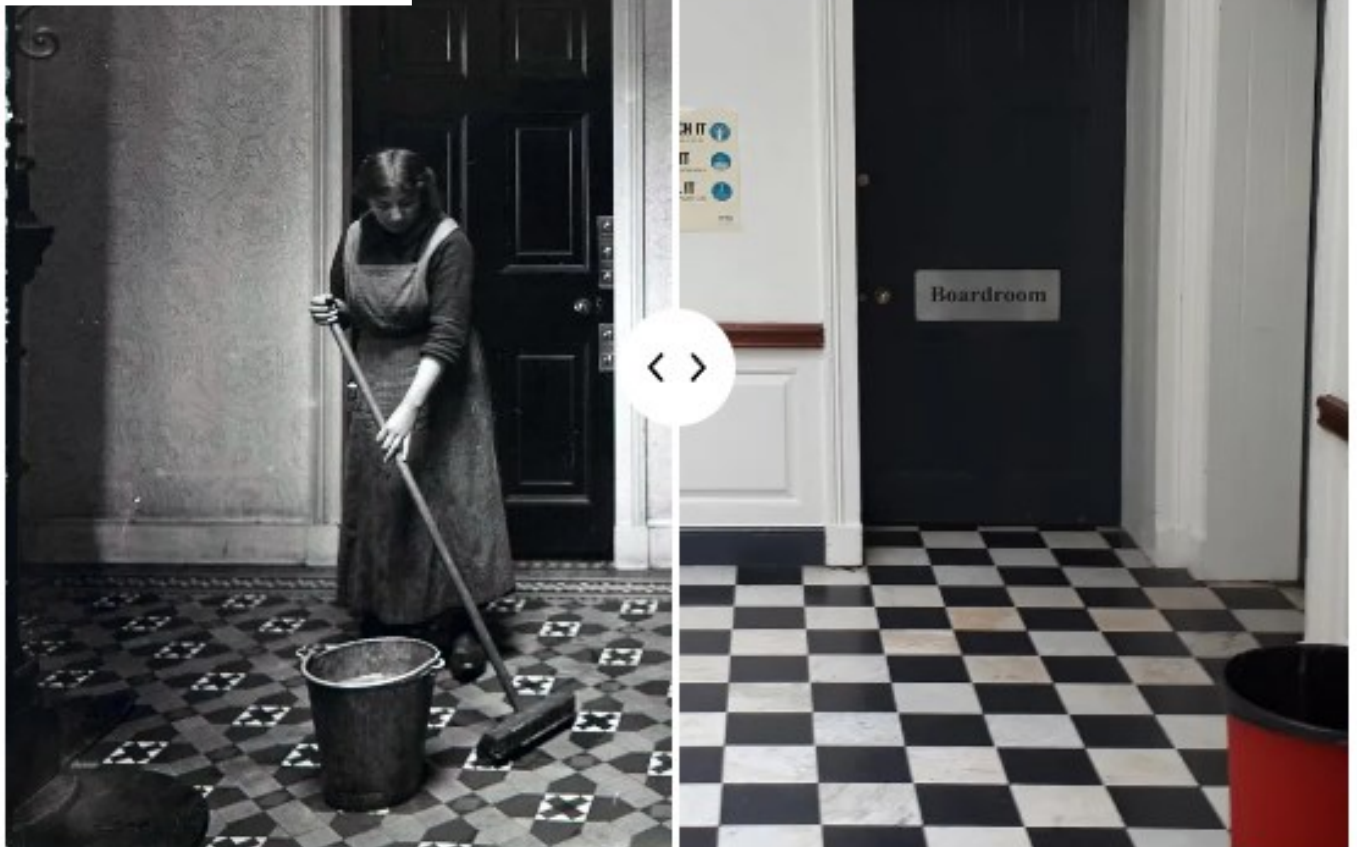
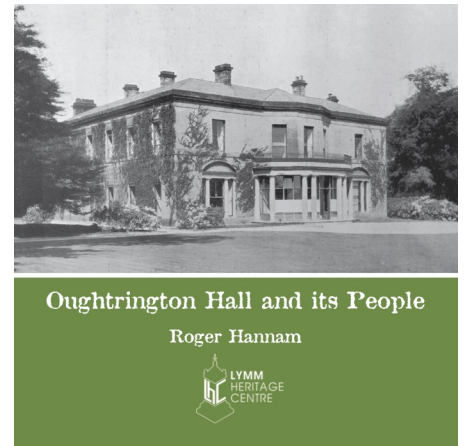
Roger told us that he enjoyed researching and writing about Oughtrington Hall, not least because his two daughters were students at the High School and his grandson attends today.

“Historic buildings are important but what brings them to life are the stories of the people who use and occupy them”, he said.

You can view more before and after photos of Oughtrington Hall by visiting Lymm High's Alumni website, [here](#).

¹*Oughtrington Hall and its People* is available from the [Lymm Heritage Centre](#) at a price of £6.50.

²Lymm Heritage, Lymm Digital Archive.





In November and December, Lymm hosted its second internal chess tournament, bringing together students and teachers in an exciting display of strategy and skill, writes Mr Soykir.

CHESS CHAMPION

The reigning champion, Ambrose Lam, once again proved his mastery of the board, retaining his title against fierce competition.

In a nail-biting final, Year 10 Ambrose faced off against the Head of KS3 Science, Mr Blackburn. The match began with an unexpected twist, Ambrose lost the first game to Mr Blackburn, who played a bold and aggressive opening. The audience, a mix of students and teachers watching the live broadcast, held

their breath as the second game commenced.

Ambrose, known for his calm and analytical approach, regrouped and delivered an extraordinary performance in the next two games. His precise moves and strategic planning turned the tide, culminating in a stunning comeback to secure his victory once again. The final move was met with applause from everyone watching, solidifying Ambrose's legacy as our chess champion.

The tournament has become an annual tradition, sparking enthusiasm and preparation for next year's competition. The buzz around the Chess Club is palpable, with students and teachers alike already devising strategies and brushing up on their skills.

Who will rise to challenge Ambrose next year? The countdown has begun!





BEST EVER RESULTS...AGAIN!

Lymm High has been celebrating another summer of success with its 2024 A' Level and GCSE results.

We were delighted that our Year 13 students who sat their exams this year have done extremely well and have in fact surpassed the record set by last year's cohort, to take the mantle of our best ever post-16 results!

Mrs Jennings, our former Head of Sixth Form, said: "I am absolutely delighted. This cohort has been an exceptional group of students, not just in terms of their exam results, but as well-rounded and delightful individuals."

"It has been a privilege to see how they have progressed over the last 2 years and the fantastic

individual results they have achieved. I really am so proud of them."

Once again nearly all Lymm High Sixth Form students secured places at their preferred universities. This includes very high numbers heading off to the most prestigious institutions, including Oxbridge, and onto the most competitive courses, such as medicine.

Mr Williams said: "I'm extremely proud of all of our Year 13 students and the fantastic results they have achieved. Having faced disruption to a significant proportion of their school years due to the pan-

demically it is remarkable that they have gone on to achieve Lymm High School's best ever post-16 results. It is a fantastic testament to their hard work, determination and resilience."

These results underline the strength of our Sixth Form, which is built on an extremely committed, supportive and hard working Sixth Form team of teachers and support staff, he said. "I am delighted for the students and would also like to thank all the staff as well as parents and carers for the support they give to our fantastic students."



Mrs Neesam is the new Head of Sixth Form.

Mrs Neesam, Lymm High's new Head of Sixth Form, said: "It's been a year of outstanding results! We wish the very best to all our former students taking those exciting next steps, many

of whom are just starting their new terms, apprenticeships or jobs. Together with our dedicated Sixth Form team, I look forward to guiding our current cohort to similar success next year!"

GCSE results

This year's GCSE results were also the best the school has ever had. Nerves were high following media reports of nationwide results dropping slightly. However, Lymm High students bucked the trend.

In all, 88% of students met the benchmark grades of 9–4 in both English and Maths, with 71% securing grades 9–5 in both subjects and 34% getting grades 9–7 in both. Across all subjects, 45% of grades were at 9–7.

Remarkably, over 70% of our students achieved at least one grade 7 (equivalent to the old A grade).

Speaking on Results Day, Mr Williams said: "After last week's phenomenal A' Level results, I could not be prouder of our students and the dedicated staff who have supported them".

Well done again to all of our former Year 11 and Year 13 students; and congratulations to all students who received the results they deserved and worked so hard to achieve.

"A heartfelt thank you to everyone – families, teachers and staff – who supported them along the way", says Mr Williams. "Your efforts have truly made a difference."



NEW MEETS OLD A



Another traditional celebration of the school's heritage saw new exciting activities and experiences for students and staff.

As well as ways to further bring the school together in celebration, Founders' Day is a fantastic opportunity to raise money and support the wider community.

One of the new events introduced this year was cardboard raft racing, hosted in Lymm Leisure Centre. Throughout the year, the school has been collecting cardboard boxes from orders in preparation for the eagerly anticipated raft race. Forms worked together to construct a sturdy, and water-ready, vessel to race across the swimming pool. "These races provided an exciting and imaginative

way to reuse old cardboard and to bring the school Forms together in competition", said Mr Hayes.

The other new addition to Founders' Day 2024 was the sponsored inflatable course. Students helped raise funds for Lymm High's Hall charities whilst racing round an inflatable obstacle course in the school grounds. As well as the monster inflatables, students took part in Sumo Suit Wrestling and a Pugil Stick Challenge. Drinks and cakes were sold in aid of the Afritwin charity.

T FOUNDERS' DAY



Community engagement is a key focus of Lymm High and throughout the year students help to run and participate in local events. During the week of Founders' Day, our skilled orchestra visited care homes in the Lymm and Statham areas and played for the residents. Other students visited local care homes to chat with the residents and create craft projects. Students, residents and the accompanying staff members all enjoyed the activities, the sharing of stories, and the lively discussions about the Euro 2024 competition!

Further community engagement involved a litter pick to help tidy up Lymm. The first locations

tackled were areas around the school itself and then Lymm Dam, which houses a lot of hidden litter, as these students discovered. Grundy Park was next, and bin bags soon began to fill up! Before returning to school, the group of students walked along the canal and continued

to clean up any litter, finding an umbrella and an oil container! Many people saw these students and complimented them on the good work they were doing, and we couldn't agree more. It's hoped that by seeing these students collect and tidy away discarded litter, it will inspire people to litter less.

The evening of Founders' Day was the traditional church service held at St. Mary's. Some students gave speeches in the service, highlighting their involvement with these community engagement initiatives.

This service is the finale to the Founders' Day celebrations, discussing and praising the students' continued help and support for the wider Lymm community.



CHARITY NEWS

The conclusion of the evening is guests being served fantastic canapés by the hard-working A' Level Hospitality team.

Another great celebration of the school's heritage, and an amazing yearly tradition to get involved with!

Our talented musicians visited care homes in the Lymm and Statham areas and played for the residents.



SCALING HEIGHTS FOR WWF



Recent Alumni may remember fellow student Kathryn Broadhurst who left Lymm High Sixth Form in 2023.

Kathryn is currently studying Zoology at Bangor University. Together with 16 students from Bangor and Swansea Universities, she has successfully made it to Everest Base Camp to raise funds for the World Wide Fund for Nature (WWF). The team are now home safe and sound having raised over £20,000.

What a fantastic achievement!



CHRISTMAS TREE FESTIVAL

The Lymm High School Art Ambassadors brought a touch of creativity and sustainability to the annual St. Mary's Church Christmas Tree Festival.

With the theme of 'Christmas Old and New', the Art Ambassadors decided to craft a tree that embraced both tradition and innovation, using eco-friendly materials to create handmade decorations.

The students chose to incorporate materials from their own recycling bins at home, transforming everyday items that might have otherwise been discarded into beautiful, eye-catching ornaments. This clever use of 'old' materials, such as cardboard, fabric scraps and plastic, brought a fresh, new life to what would usually be overlooked.



The Visual Arts department has proudly taken part in the Christmas Tree Festival every year. It was a wonderful start to the festive period, showcasing the incredible talent of our students and the school's commitment to sustainability.

"A huge congratulations to our Art Ambassadors for their hard work and creativity – their efforts have been amazing", said Miss Simms.

Lymm High's brass band also took part in the festival. St. Mary's Church Warden George Bainton, told us: "They were really great, and it's always a pleasure to have them come along and entertain us!"

Footloose

Lymm High's latest production was a vibrant and energetic musical, celebrating the power of self-expression, friendship, and the joy of dance.

Following the success of *High School Musical* last year, we continued our foray into the world of musical theatre with this exciting production, writes Mrs Richards.

Footloose is based on the hit 1984 film, with music by Tom Snow and lyrics by Dean Pitchford. The musical tells the story of Ren McCormack, a teenager who moves to the small town of Bomont, where dancing and rock music have been banned. Ren's spirited resistance to the town's oppressive rules – particularly those enforced by the stern Reverend Shaw Moore – drives the heart of the story. As Ren fights for the right to dance and live freely, he inspires the townspeople, including the Reverend's daughter Ariel, to rediscover the importance of joy, individuality and community.

This production showcases the talents of our students in acting, singing, dancing and technical design. The ensemble has worked tirelessly to perfect every scene, each bringing their passion and energy to every performance. From the high-energy dance numbers to the heartfelt emotional moments, *Footloose* is a show that is both inspiring and uplifting.

We are incredibly proud of the dedication and teamwork our cast and crew have shown in bringing this production to life. They have spent countless hours rehearsing, learning choreography, perfecting their lines, and supporting one another through this journey.

To read the full programme, [click here](#).





Thank you to Year 13 Emily Kershaw & Lily Johnston for the excellent photography.

MEET THE NEW STUDENT LEADERSHIP TEAM



This year, we had an overwhelming response with 19 high-calibre applicants applying for various leadership roles within our Sixth Form.

Each applicant showed dedication and a passion for serving our school community. All 19 students have been successfully placed into various leadership roles within the school. These positions allow them to represent and advocate for issues that are important to them, including eco-awareness, LGBTQ+ support and charitable activities.

Head of Student Leadership

Kallika Vyas

“I am excited to begin my work as Head Student. Above all, I hope to improve students’ confidence and enthusiasm in their studies, primarily by building upon the success of our paired reading programme and establishing a mentoring system to cover a wider variety of subjects and year groups. I will also strive to immerse students in the wider Lymm community, creating links with local businesses and promoting social responsibility. Finally, I wish to ensure that Life Programme sessions equip students with the necessary skills to enter adulthood in 2025.”



Head of Student Leadership

Elizabeth Nelson

“I am very honoured and excited to jointly lead the Student Leadership Team this year! I would love to be able to help create an enjoyable and safe environment at school, because I feel it is important for everyone to feel free to be themselves, feel accepted, and feel they matter. I am really looking forward to the year ahead and working with the other members of the Student Leadership Team.”



Deputy Head Student

Beth Parkinson

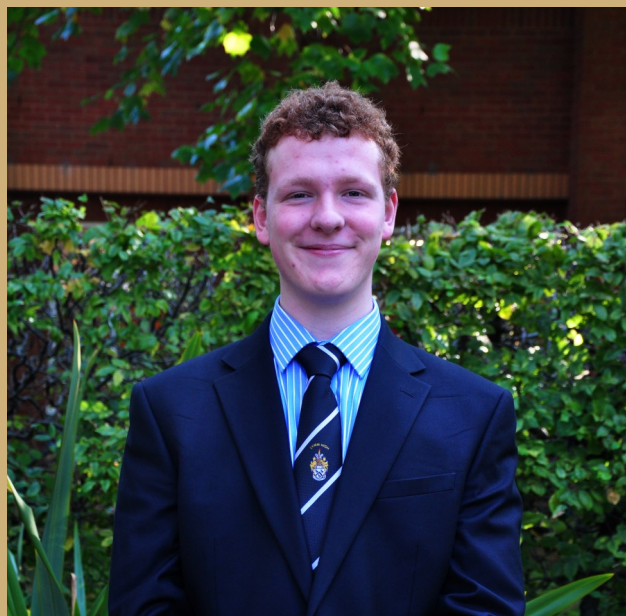
“As Deputy Head Student, I aspire to provide greater encouragement and participation of women’s sport, ensuring everybody has a chance to try something new and express their talent. I also aim to provide a mentoring system between Sixth Form and younger years providing a supportive environment where students can build confidence in their ability and look up to their older role models. I am eager to make a positive legacy in my role and will work hard to ensure students have an enjoyable, welcoming experience at Lymm High School.”



Deputy Head Student

David Baker

“I’m really excited to have been chosen as Deputy Head Student representing Arley. I plan to help students with their studies through help with revision strategies and I will promote the school at outside events. I’m looking forward to supporting everyone and working on making our school an even better place.”





RENOVATING LYMM

Over the summer holiday of 2024, our maintenance team were busy updating, repairing and renovating Lymm High.

- Design Technology has a vibrant, new wall display.
- The female changing rooms in the Leisure Centre have been refurbished.
- A new science lab is in E311.
- One of our Food Tech rooms (E216) has been completely overhauled and made accessible for all students.
- A Block toilets have been completely replaced.
- We now have a new servery in the main canteen.





YOUR
SCHOOL
LOTTERY

**SUPPORT
OUR LOTTERY
TODAY**

**£1 per
week**

**Weekly
cash prizes**

**£25,000
jackpot**



Splitting the £1.00

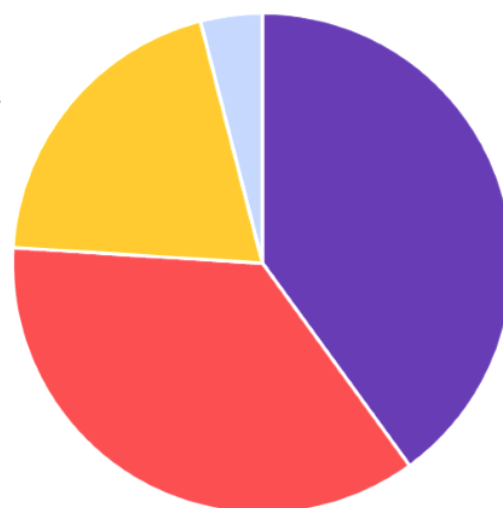
How it works...

It's simple—choose 6 numbers between 0-9 and if they match the weekly lottery draw, you win great prizes. One of our players will win a cash prize every week, maybe even the £25k jackpot! Tickets cost just £1 per week and the proceeds are donated to Lymm High School

Every Saturday at 8pm the numbers are drawn and posted online. Winners are notified by email and winnings paid into the account of your choice.

The easiest way to join our lottery is online by direct debit or debit card.

It's so easy to join and will make a real difference to Lymm High School



- 40p** goes to our school
- 36p** goes to cash prizes
- 20p** goes to admin costs
- 4p** goes to VAT

The Maths... 100 tickets sold a week means

= £30 weekly cash prize

= £2,080 a year for our school



Buy A Ticket

GambleAware



JUNIORS CONTRIBUTE TO CRICKET CLUB SUCCESS

Lymm Oughtrington Park Cricket Club (LOPCC) 1st X1 team has been promoted to Division One of the Cheshire Cricket League after one of its most successful seasons of recent years.

The Cricket Club's achievement has been partly attributed to talented junior players bolstering the senior teams. The decision to prioritise junior development and fast track younger players into the senior team has certainly paid off.

Several Lymm High School students made their debuts this year for the Second Team, with Year 11 Reuben Roberts cementing his place in 1st XI team as an effective all-rounder. As the only junior player in the team, he seems to be really enjoying playing alongside the seniors and told us: "They are all really impressive role models and I have learnt so much this season. Being part of the team motivates me to work harder and seeing what I can achieve in the future is very exciting."

The Club caters for all standards of player and has five senior teams, a women's team and numerous opportunities for juniors of all ages to learn and play.

